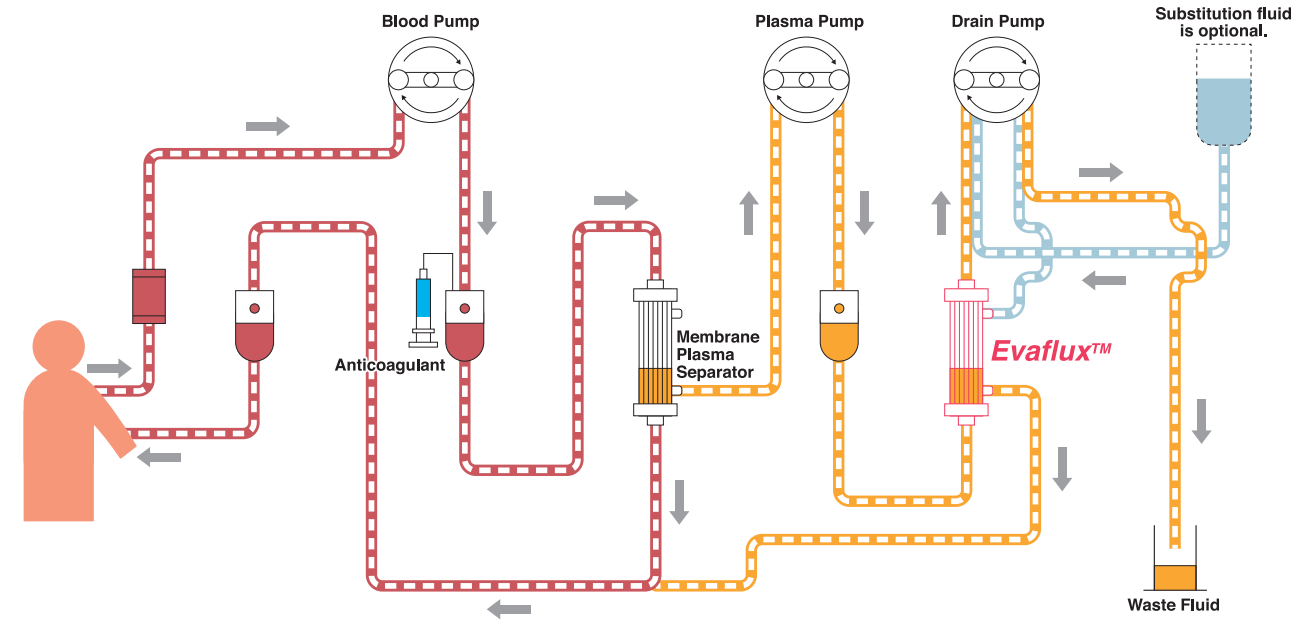
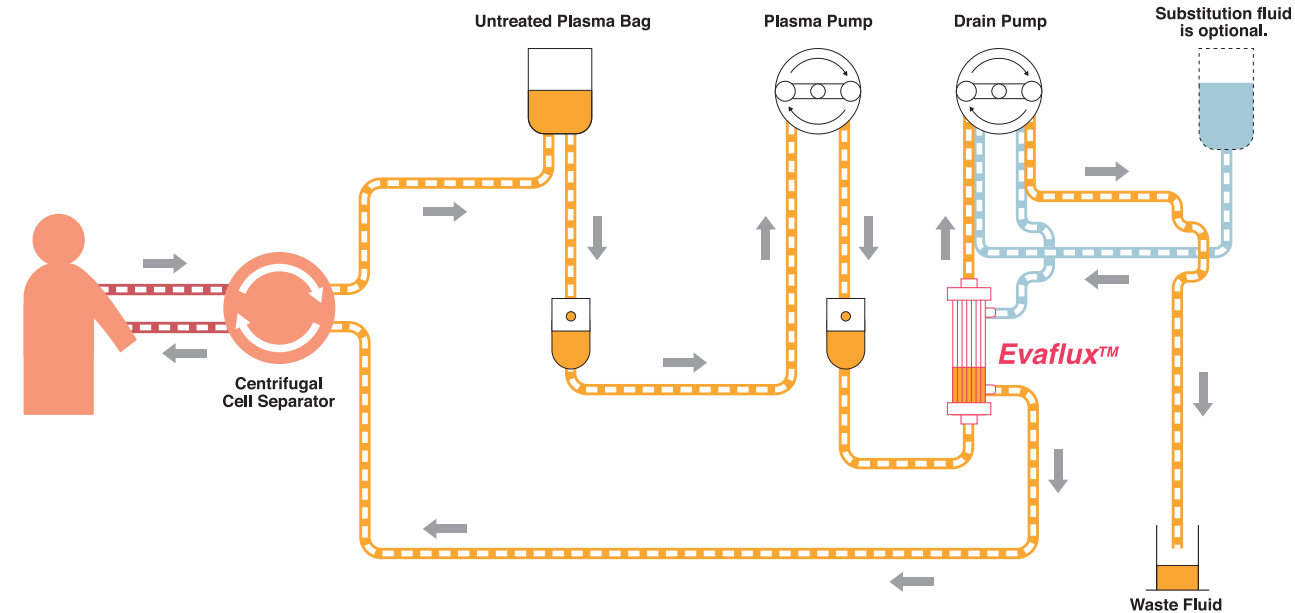




Flow Diagram of Double Filtration



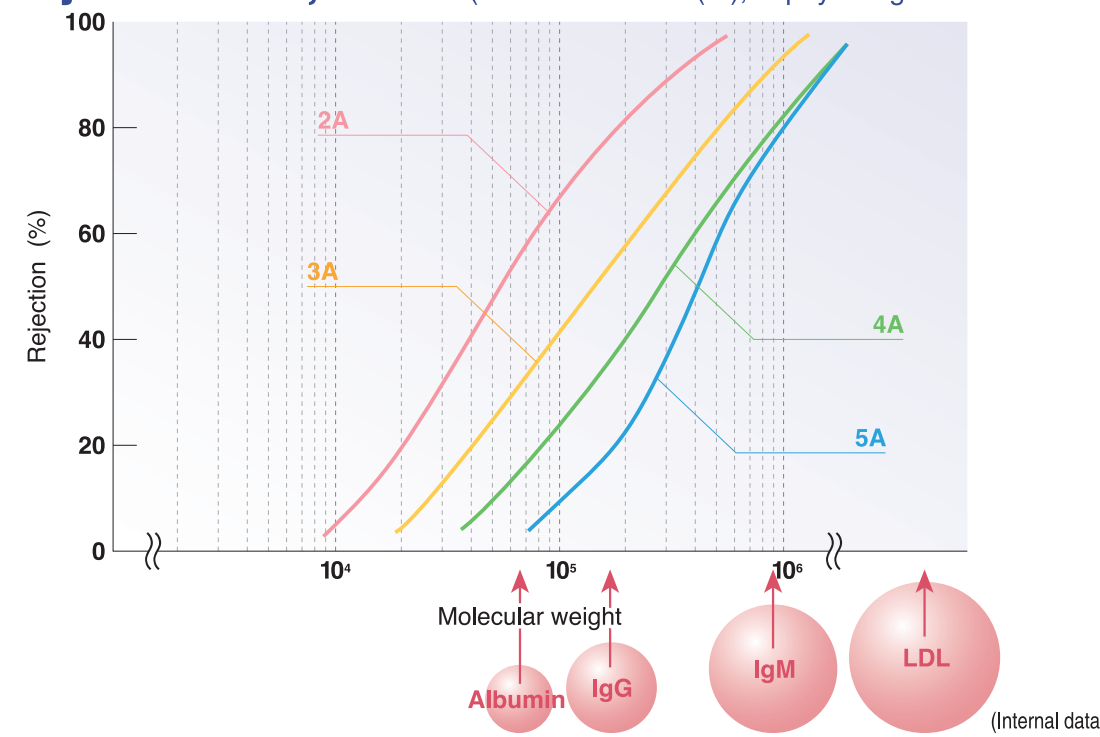
Flow Diagram of Cascade Filtration (in combination with Centrifugal Cell Separator)



Specifications

Model	2A10	4A10	5A10	2A20	3A20	4A20	5A20
Hollow Fiber	Material						
	Ethylene vinyl alcohol copolymer						
	Inner diameter						
175 (μm)							
Wall thickness							
40 (μm)							
Housing	Surface area			2.0 (m ²)			
	1.0 (m ²)			Effective length			
	280 (mm)						
	Outer dimension			57 Ø x 280 L (mm)			
45 Ø x 280 L (mm)							
Material							
Poly-carbonate resin							
Priming volume			Approx.82 (ml)		Approx.150 (ml)		
Filled liquid							
Sterile water							
Sterilization method							
Gamma-ray irradiation							

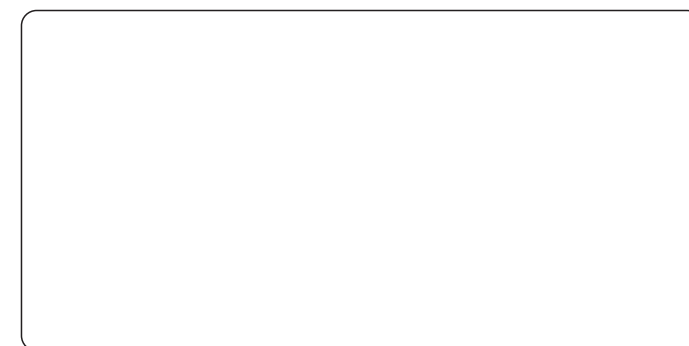
Protein rejection curve, in vitro (concentration:0.1(%), in physiological saline solution)



Bibliography

- (*) H. Borberg, et al. The Role of Rheology in Hemapheresis, Therapeutic Apheresis 5 (2):128-133, 2001
- (*) H. Borberg and M. Tauscher, Rheohaemapheresis of ophthalmological diseases and diseases of the microcirculation, Transfusion and Apheresis Science 34:41-49, 2006
- (*) M. Bláha, et al. The importance of rheological parameters in the therapy of the dry form of age-related macular degeneration with rheohaemapheresis, Clinical Hemorheology and Microcirculation 50:245-255, 2012
- (*) M. V. Ezhov, et al. Cascade plasma filtration during the first year after CABG in patients with hyperlipidemia refractory to statins, Atherosclerosis Supplements 14:101-105, 2013
- (*) H. Yamada and K. Takamori, Status of Plasmapheresis for the Treatment of Toxic Epidermal Necrolysis in Japan, Therapeutic Apheresis and Dialysis 12 (5):355-359, 2008
- (*) R. Bruni, et al. Cascade filtration for TTP: an effective alternative to plasma exchange with cryodepleted plasma, Transfusion Science 21:193-199, 1999
- (*) M. Muramatsu, et al. Effectiveness of Plasma Exchange and Double-Filtration Plasmapheresis for the Removal of MPO-ANCA: Two Case Reports of Pulmonary Hemorrhage Due to MPO-ANCA-Associated Vasculitis Syndrome in Patients Undergoing Maintenance Hemodialysis, Jpn J Apheresis 15 (1):83-84, 1996
- (*) N. Hajime, et al. A Case Report of Efficiency of Double Filtration Plasmapheresis in Treatment of Goodpasture's Syndrome, Therapeutic Apheresis and Dialysis 13 (4):373-377, 2009
- (*) H. Borberg, Double membrane filtration in therapeutic Haemapheresis, 15th Congress of the Interdisciplinary European Society for Haemapheresis and Haemotherapy, October 5-9th, 2005
- (*) N. Shibuya, Apheresis manual (2nd ed.) - as revolutionary therapy for intractable diseases- pp.17, Fig1, 2004
- (*) T. Agishi, et al. Double Filtration Plasmapheresis, Therapeutic Apheresis 4 (1):29-33, 2000
- (*) T. Suehiro, et al. Clinical Evaluation of Newly Improved EVAL Second Filters, Therapeutic Plasmapheresis (XII), pp.771-774, 1993
- (*) A. Sueoka, Therapeutic Apheresis Application Using Membrane Plasma Fractionation Technology: Present Scope and Limitations, Therapeutic Apheresis 4 (3):211-212, 2000
- (*) K. Tojo, et al. Possible therapeutic application of low density lipoprotein apheresis (LDL-A) in conjunction with double filtration plasmapheresis (DFPP) in drug-resistant nephrotic syndrome due to focal glomerular sclerosis (FGS), Japanese Journal of Nephrology 30 (9):1153-1160, 1988
- (*) S. Takagi, et al. Double-Filtration Plasmapheresis for Pretreatment of ABO-Incompatible Renal Transplantation, Jpn J Apheresis 15 (1):65-66, 1996
- (*) M. Suzuki, et al. Evaluation of Double Filtration Plasmapheresis, Thermofiltration, and Low-Density Lipoprotein Adsorptive Methods by Crossover Test in the Treatment of Familial Hypercholesterolemia Patients, Artificial Organs 20 (4):296-302, 1996
- (*) Y. Matsui, et al. Double-Filtration Plasmapheresis in the Treatment of Pemphigus, Jpn J Apheresis 15 (1):73-74, 1996
- (*) H. Yamada, et al. Combination Method for Plasma Exchange in the Treatment of Bullous Pemphigoid, Therapeutic Plasmapheresis (VI), pp.159-163, 1988
- (*) M. Shikano and T. Niwa, Effects of Double Filtration Plasmapheresis on Systemic Lupus Erythematosus: Serological Study, Therapeutic Plasmapheresis (VII), pp.148-151, 1988
- (*) M. Itoh, et al. Clinical and Immunological Evaluation of Double Filtration Plasmapheresis in Rheumatoid Arthritis, Therapeutic Plasmapheresis (IX), pp.389-393, 1991
- (*) H. Nagasaka, A Macroglobulinemic Case Accompanied by Pulmonary and Cholestatic Lesions Treated with Long-Term Double-Filtration Plasmapheresis, Jpn J Apheresis 14 (1):131-132, 1995
- (*) F. Taniguchi, et al. Successful Management of a P-Incompatible Pregnancy Using Double Filtration Plasmapheresis, Gynecol Obstet Invest 56:117-120, 2003
- (*) H. Okada, et al. Comparative Study of Clinical Effects Between Plasma Adsorption and Double Filtration Plasmapheresis in Patients with Myasthenia Gravis, Therapeutic Apheresis 1 (4):343-347, 1997
- (*) M. Hida, et al. Efficacy and Indication for Plasmapheresis in Treatment of Intractable Neurological Disorders, Therapeutic Plasmapheresis (IX), pp.160-166, 1991
- (*) K. Kumazawa, et al. Plasmapheresis in Chronic Inflammatory Demyelinating Polyradiculoneuropathy (CIDP): Its Correlation to Clinical Features, Jpn J Apheresis 13 (2):162-163, 1994
- (*) A. Kawashima, Low-density Lipoprotein Apheresis in the Treatment of Peripheral Arterial Disease, Therapeutic Apheresis and Dialysis 7 (4):413-418, 2003

Distributed by



Manufacturer :

KAWASUMI LABORATORIES, INC.



Head Office : Shinagawa Intercity Tower B, 2-15-2, Konan, Minato-ku, Tokyo, 108-6109, Japan
Mie Factory : 7-1 Tamada, Mie-Machi, Bungo ohno-shi Oita, 879-7153, Japan

EC Regulatory Representative :

MPS Medical Product Service GmbH.
Borngasse 20, 35619 Braunfels, Germany

Double/Cascade Filtration
with Plasma Fractionator

Benefits

1. Selective depletion of plasma components based on their molecular size
2. Reduced or no requirement for substitution fluid
3. Wide range of applications



Double/ Cascade Filtration with Plasma Fractionator

Applications of Double/ Cascade Filtration

Double/ Cascade Filtration is applicable for a variety of diseases.

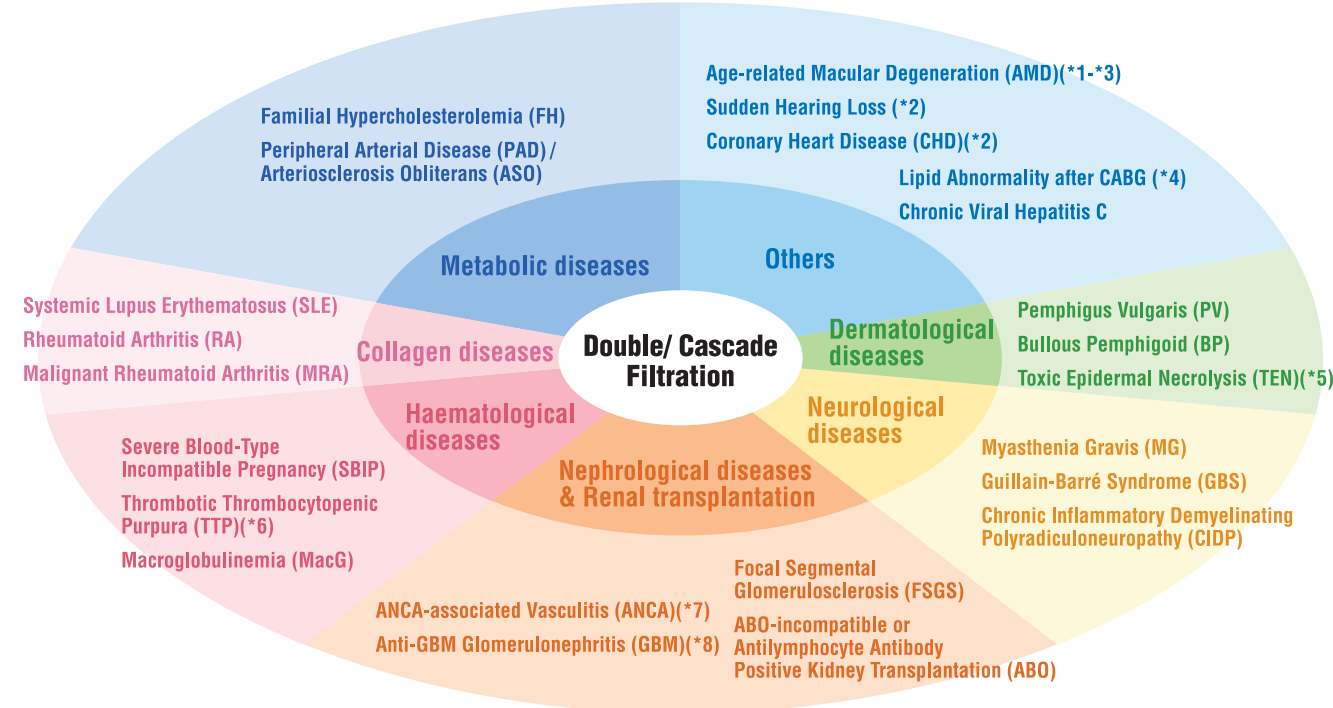


Fig 1 : Applications of Double/ Cascade Filtration (Based on Japanese Health Insurance coverage and Bibliography references 1 to 8)

Role of Double/ Cascade Filtration

Double/ Cascade Filtration, which is similar to other apheresis procedures, can significantly contribute to the improvement of the patients' quality of life, abbreviate the time required to obtain remission, support the dose reduction of medications, diminish the side effects of drugs and enable the treatment of otherwise untreatable diseases. (Excerpt from *9)

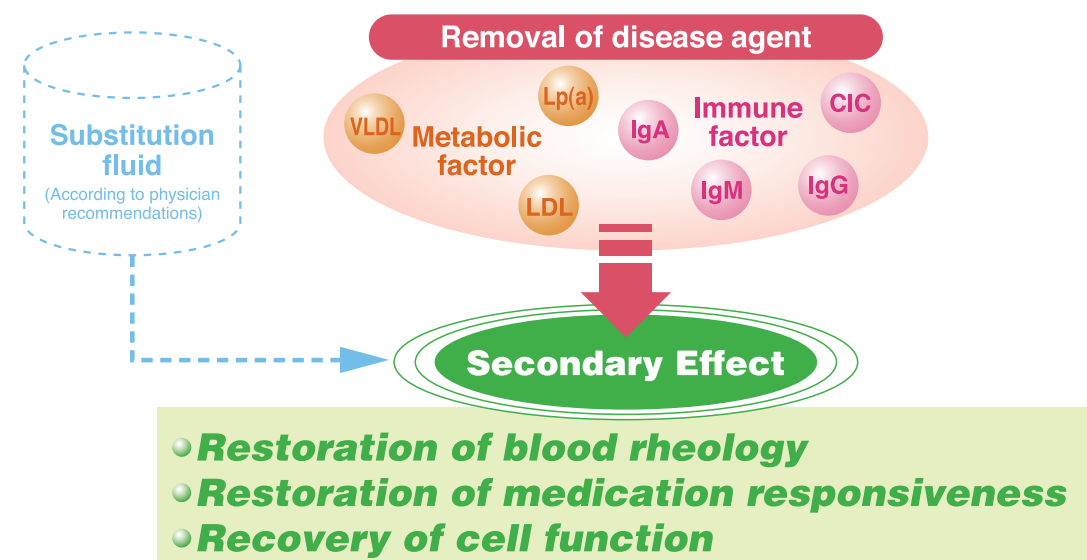


Fig 2 : How Double/ Cascade Filtration works (Excerpt from *10)

What is Double/ Cascade Filtration?

Principle

To selectively deplete a plasma fraction that contains disease associated high molecular weight substances and to reduce or eliminate the requirement for substitution fluid such as albumin.

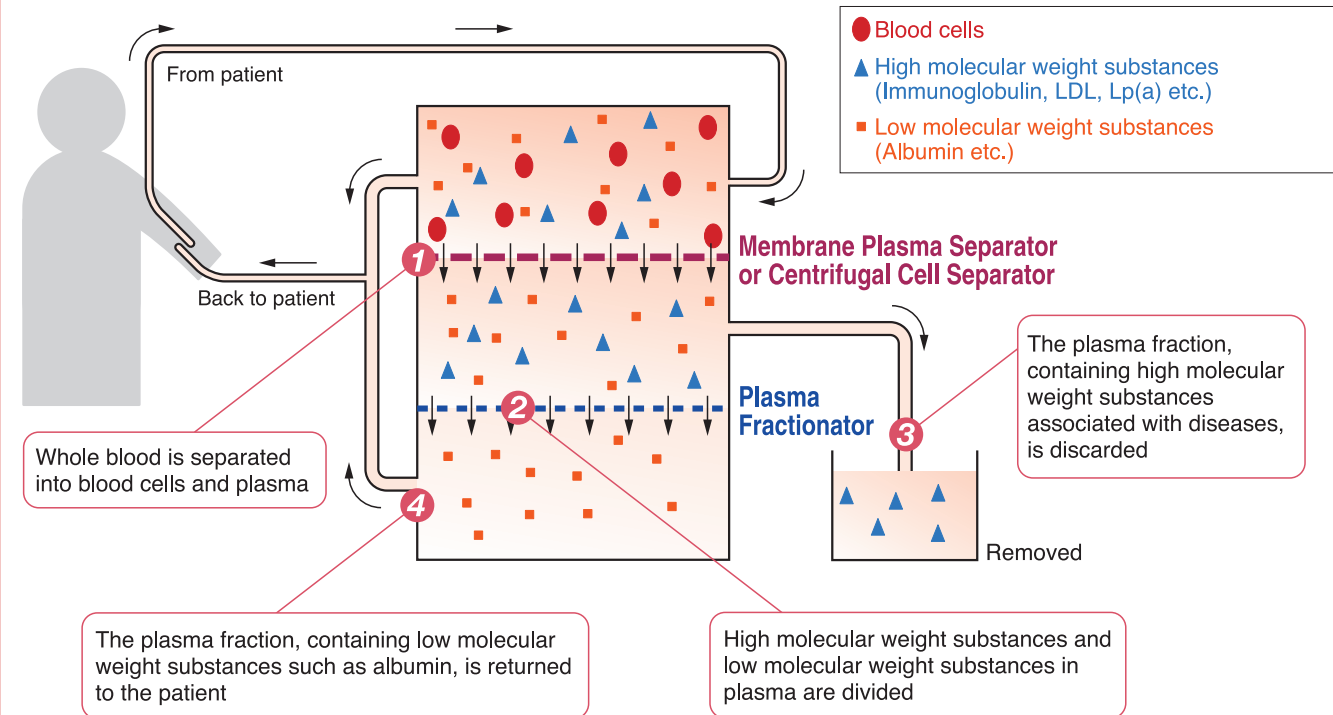


Fig 3 : Principle of Double/ Cascade Filtration (Conceptual diagram was proposed by Prof. Agishi, *11)

Benefits of Double/ Cascade Filtration

Benefit 1 Selective depletion of plasma components based on their molecular size

Benefit 2 Reduced or no requirement for substitution fluid

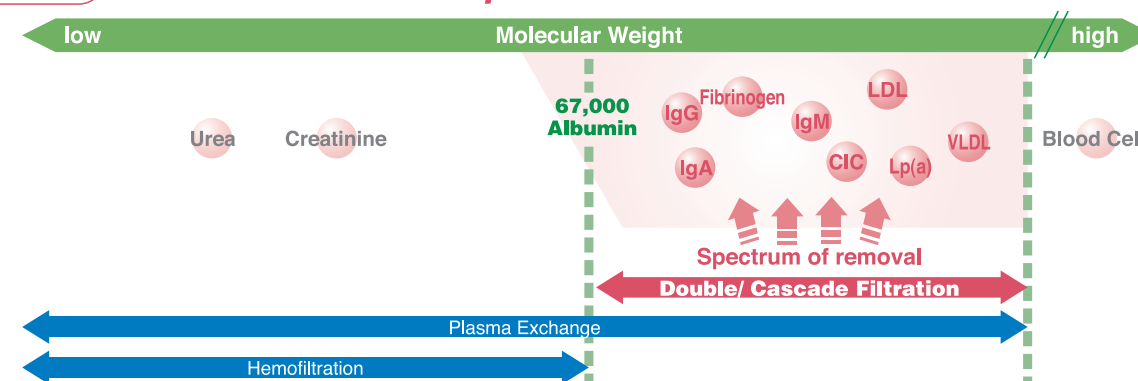


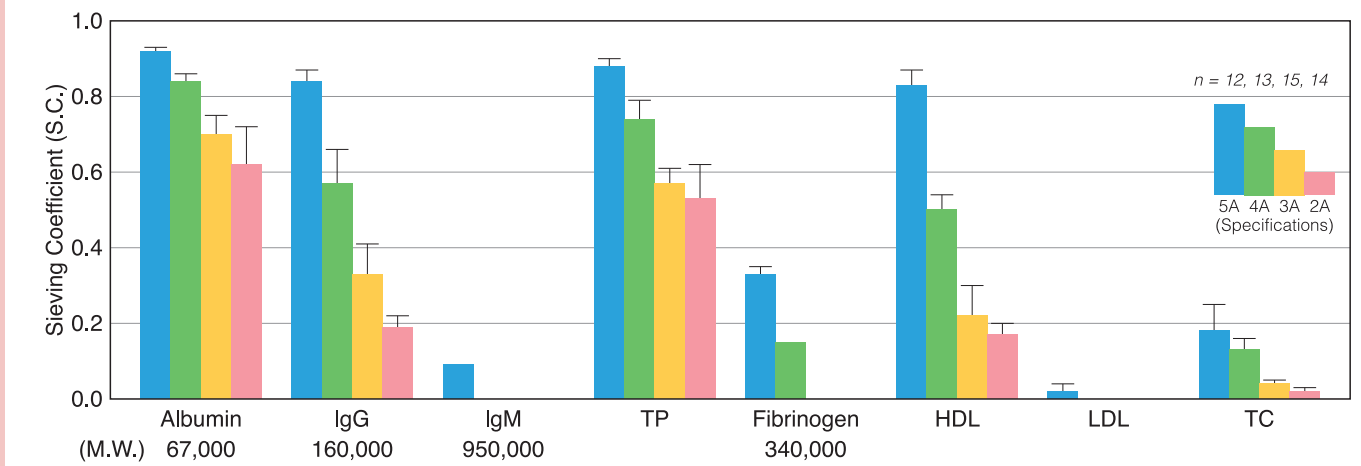
Fig 4 : Spectrum of substances removed by Double/ Cascade Filtration

Benefit 3 Wide range of applications

Double/ Cascade Filtration can remove the targeted high molecular weight substances efficiently by choosing the appropriate plasma fractionator with specific pore size.

Example of Plasma Fractionator Evaflux™

~ Selectable from 4 different pore size (2A, 3A, 4A, 5A) according to diseases ~ (*12,*13)



* S.C. is a parameter indicating the membrane permeability at a certain point.

Fig.5 Sieving Coefficient of "Evaflux™" (When 1,000 ml of plasma was processed)

Evaflux™ 2A can remove Immunoglobulins while allowing Albumin to be returned.

Evaflux™ 2A	Alb. ■	IgG ✕	IgM ▲
S.C.	0.62	0.19	0.00

Evaflux™ 5A can remove LDL while allowing Albumin and HDL to be returned.

Evaflux™ 5A	Alb. ■	HDL ●	Fib. ●	LDL ●
S.C.	0.92	0.83	0.31	0.02

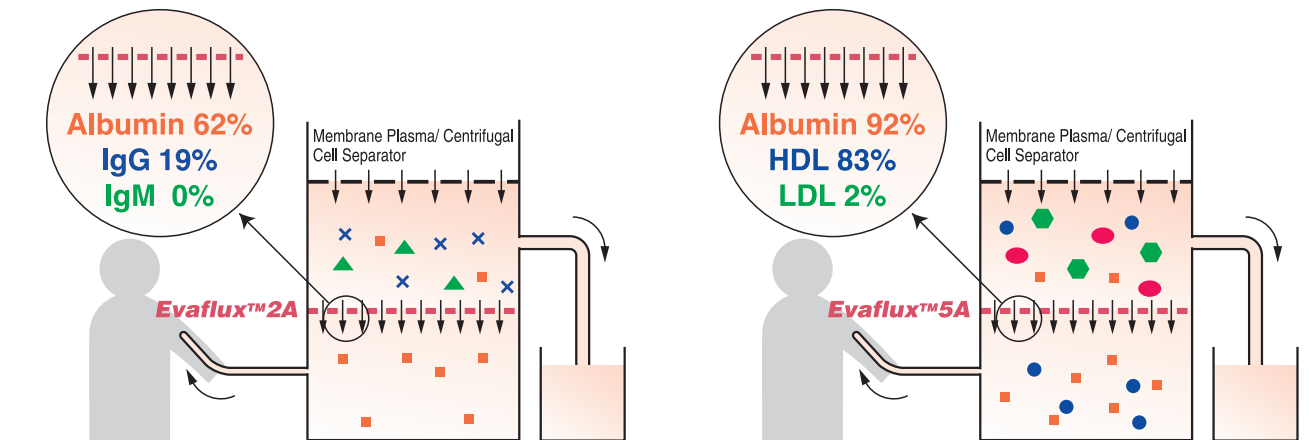


Table 1 : Example of reports about the Double/ Cascade Filtration with "Evaflux™"

Evaflux™	Model	Nephrological/ Renal transplantation				Metabolic		Dermatological		Collagen		Haematological		Neurological		Others
		ANCA (*7)	GBM (*8)	ABO (*15)				PV (*17)	BP (*18)	SLE (*19)		SBIP (*22)	MG (*23)	GBS (*24)	CIDP (*25)	AMD (*1-3)
	2A															
	4A		FSGS (*14)							RA, MRA (*20)						
	5A					FH (*16)	PAD (*26)				MacG (*21)					

* Table 1 shows representative examples.

* Please note that the above table is for reference use only. The responsible physician will need to choose a specific membrane according to the patient's condition.